



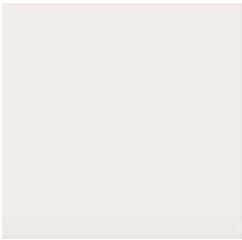
Powder Coat Paint

INDUSTRIES

IAC workstations feature state-of-the-art, electrostatic, powder coat paint finishes. Applied in our factory, these finishes are oven-baked to enhance color consistency and durability. Compared to typical spray paint finishes, IAC powder coat paint is far more resistant to chipping, flaking and peeling.

ESD paint is available on request. Additional charges may apply.

Due to monitor and printer color discrepancies, some color swatches represented here may not accurately match true paint color. Please consult with an All-Spec representative to see actual paint samples if color is critical.



Antique White
H



Appliance White
W



Ivory
C



Dove Gray
N



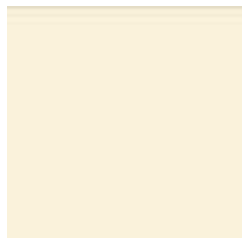
Cream
Crm



Designer Beige
O



Textured Almond
J



Smooth Almond
M



Navy
NB



Port Red
G



Sky Blue
D



Walnut
P



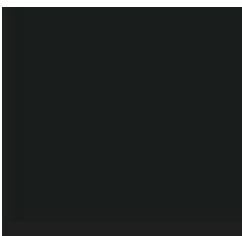
Gun Metal Gray
S



Textured Gray
I



Textured Black
X



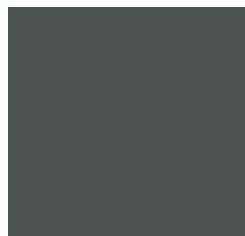
Gloss Black
B



Appollo Blue
A



Wineberry
L



Charcoal Gray
K



Teal
T



PSG Powder Coat Paint

INDUSTRIES

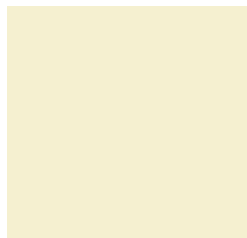
Used only on the following Production Systems Group products:

- EZE Workmaster Series
- Kinetechincs System I Series
- Spacestation Series

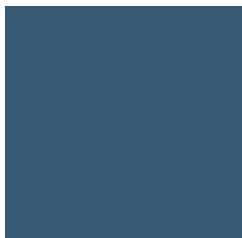
Due to monitor and printer color discrepancies, color swatches represented here may not accurately match true color and texture. Please consult with an All-Spec representative to see actual laminate samples if color is critical.



Dove Gray
DG



Ivory
IV



EZE Blue
BL



Laminates

INDUSTRIES

IAC Standard Worksurface Laminates

IAC uses only high pressure postforming horizontal grade laminates.

All laminates are chemical resistant and comply with federal specifications governing impact, abrasion and chemical resistance (FED Spec-L-P-508H).

Chemical resistant and Laboratory Grade Laminates are available, please consult the factory.

Due to monitor and printer color discrepancies, color swatches represented here may not accurately match true laminate color and texture. Please consult with an All-Spec representative to see actual laminate samples if color is critical.



LoGlare White
01



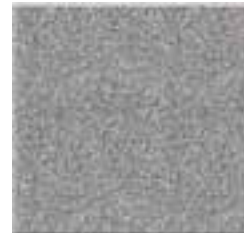
Champagne Beige
05



Almond
36



Dove Gray
06



Gray Matrix
16



Winter Gray Matrix
18



Navy
59



Chesapeake Blue
66



INDUSTRIES

IAC ESD Worksurface Laminates

Resistant measurements are used to establish the charge draining capacity of dissipative hard laminate.

All worksurfaces are tested for resistivity

Surface to ground testing R (ohms): 1x10⁶ minimum 1x10⁶ maximum.

Surface to surface testing R (ohms): 1x10⁶ minimum 1x10⁶ maximum.

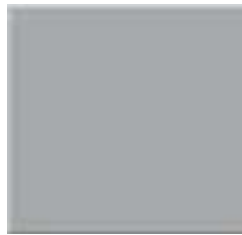
Due to monitor and printer color discrepancies, color swatches represented here may not accurately match true laminate color and texture. Please consult with an All-Spec representative to see actual laminate samples if color is critical.



3M White
10



3M Beige
08



3M Gray
09



Nevamar White
14



Nevamar Almond
15



Nevamar Beige
12



Nevamar Gray
13

IAC Trim & Accent Laminates

Trim and accent color laminate must be specified when ordering Dimension 4 uprights, Pro Series, rolling carts, MAS and SAS, and Airclean Workstations.

Due to monitor and printer color discrepancies, color swatches represented here may not accurately match true laminate color and texture. Please consult with an All-Spec representative to see actual laminate samples if color is critical.



Appollo Blue
30



Wineberry
29



Charcoal Gray
31



Teal
32